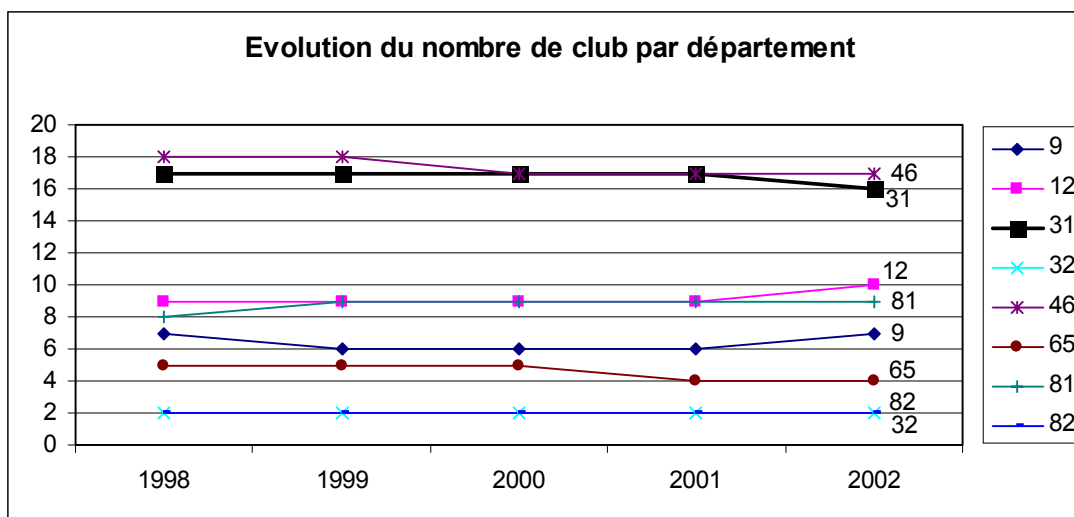
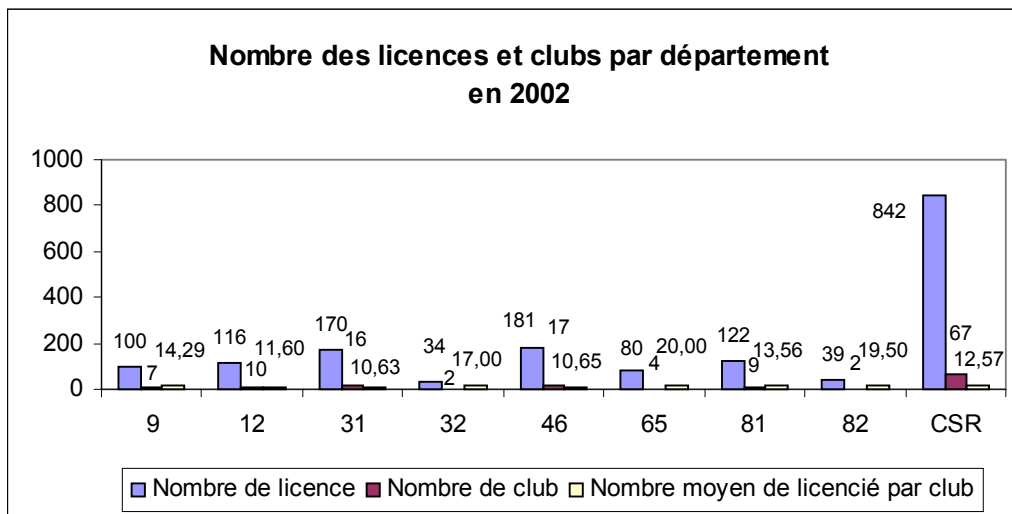




COMITE DE SPELEOLOGIE REGIONAL
EQUIPE TECHNIQUE REGIONAL
ELEMENTS D'ANALYSES ET D'OBSERVATIONS
ANNEE 2002

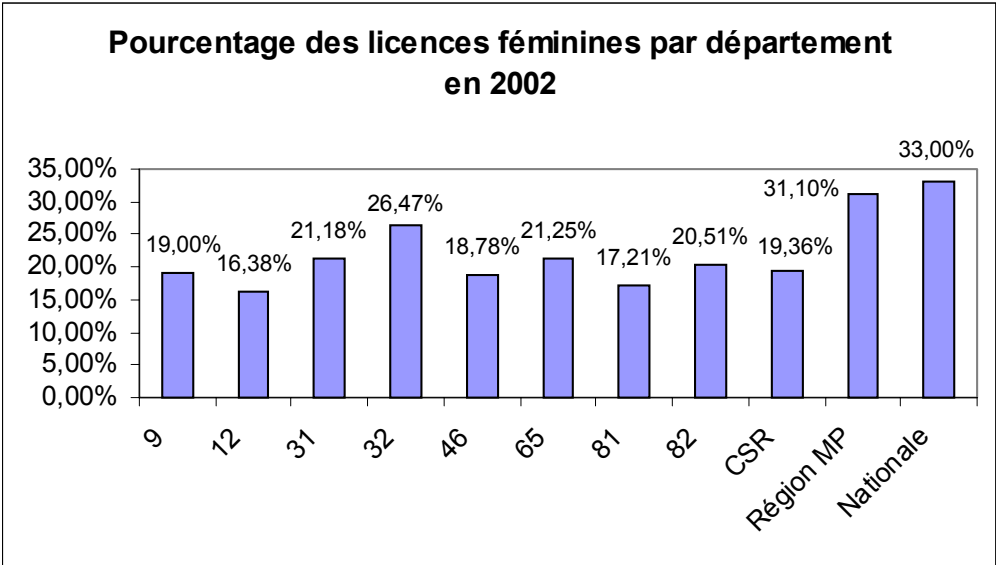
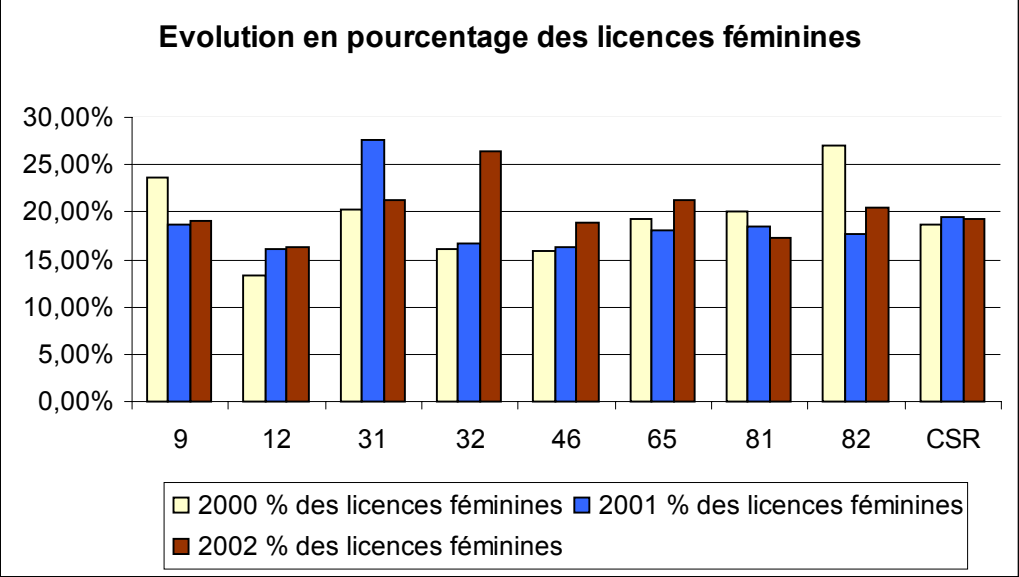
LICENCES ET CLUBS :



Coupons d'initiation exploités en 2002

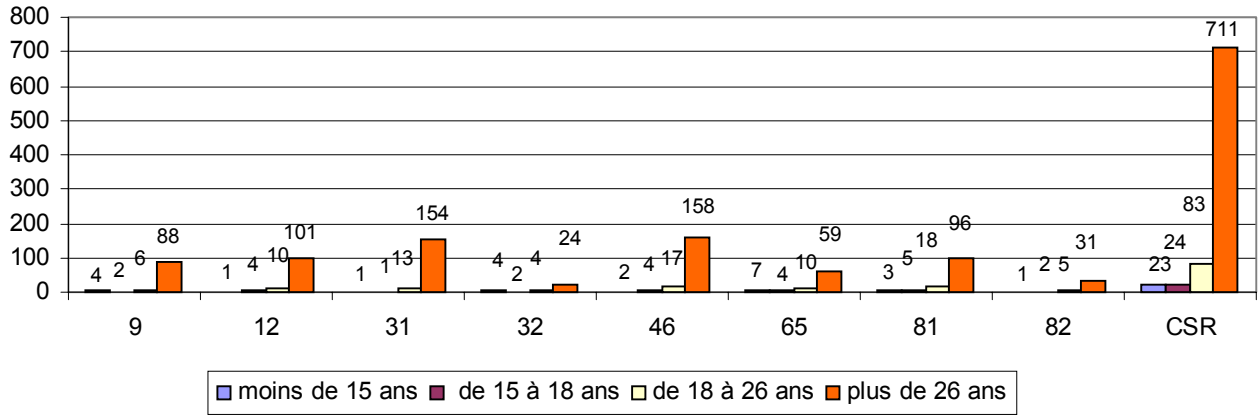
CDS	F-18	% F-18	F+18	% F+18	Tot F	% F	H - 18	% H - 18	H + 18	% H + 18	Tot H	% H	Tot F + H	% -18	% + 18
9	23	23,23%	10	10,10%	33	33,33%	37	37,37%	29	29,29%	66	66,67%	99	60,61%	39,39%
12	8	13,11%	22	36,07%	30	49,18%	9	14,75%	22	36,07%	31	50,82%	61	27,87%	72,13%
31	12	8,11%	49	33,11%	61	41,22%	21	14,19%	66	44,59%	87	58,78%	148	22,30%	77,70%
32	3	23,08%	4	30,77%	7	53,85%	4	30,77%	2	15,38%	6	46,15%	13	53,85%	46,15%
46	20	13,70%	44	30,14%	64	43,84%	47	32,19%	35	23,97%	82	56,16%	146	45,89%	54,11%
65	9	12,86%	25	35,71%	34	48,57%	12	17,14%	24	34,29%	36	51,43%	70	30,00%	70,00%
81	13	20,97%	12	19,35%	25	40,32%	13	20,97%	24	38,71%	37	59,68%	62	41,94%	58,06%
82	10	9,71%	16	15,53%	26	25,24%	33	32,04%	44	42,72%	77	74,76%	103	41,75%	58,25%
Total	98	13,96%	182	25,93%	280	39,89%	176	25,07%	246	35,04%	422	60,11%	702	39,03%	60,97%

FEMME ET SPELEOLOGIE :

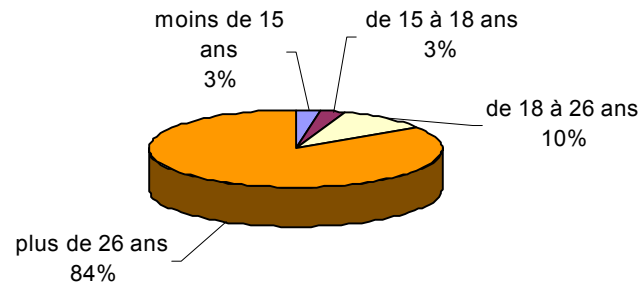


JEUNES ET SPELEOLOGIE :

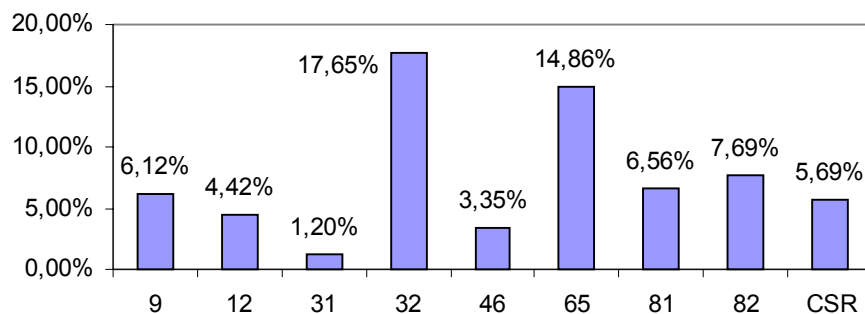
Nombres des licences par catégorie d'âge en 2002



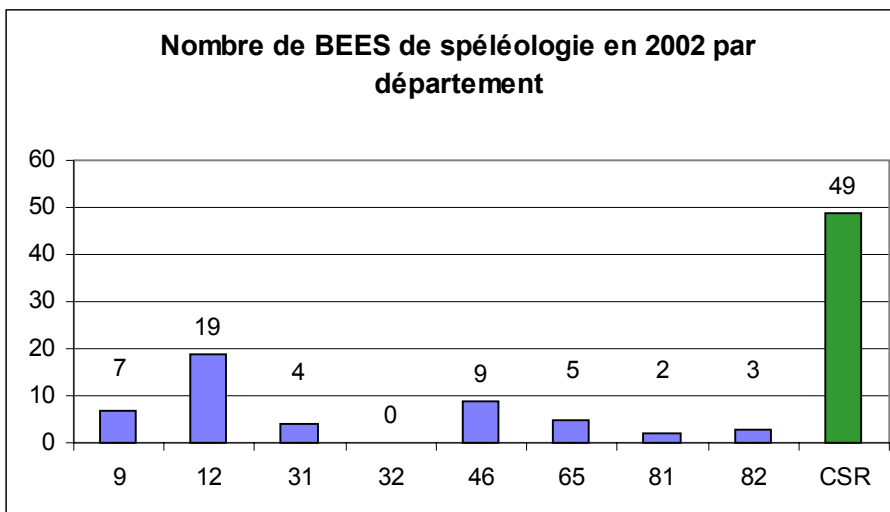
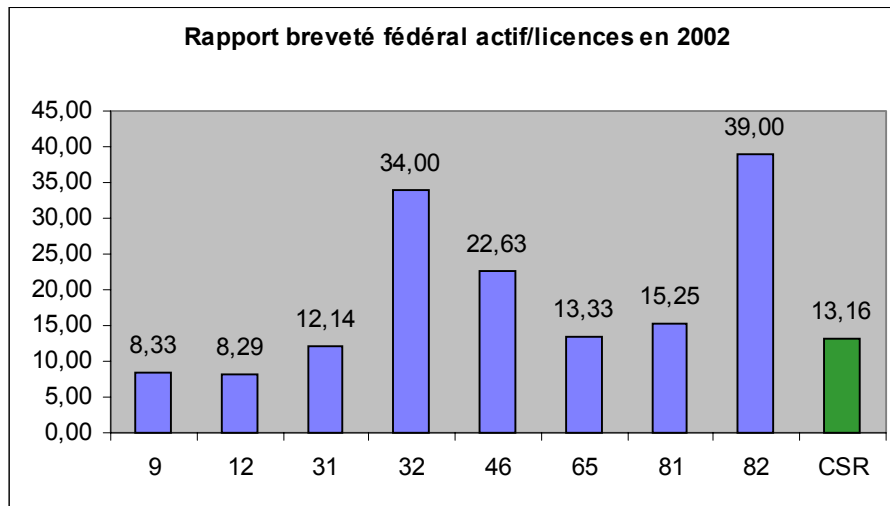
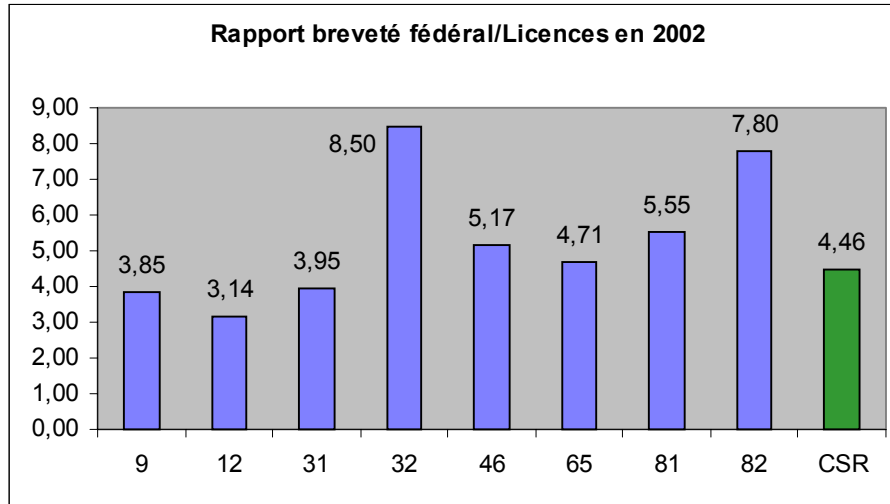
Répartition par catégorie d'âge des licences en région Midi Pyrénées en 2002



Pourcentage des jeunes de moins de 18 ans par département en 2002



BREVETES :



BUDGET :

